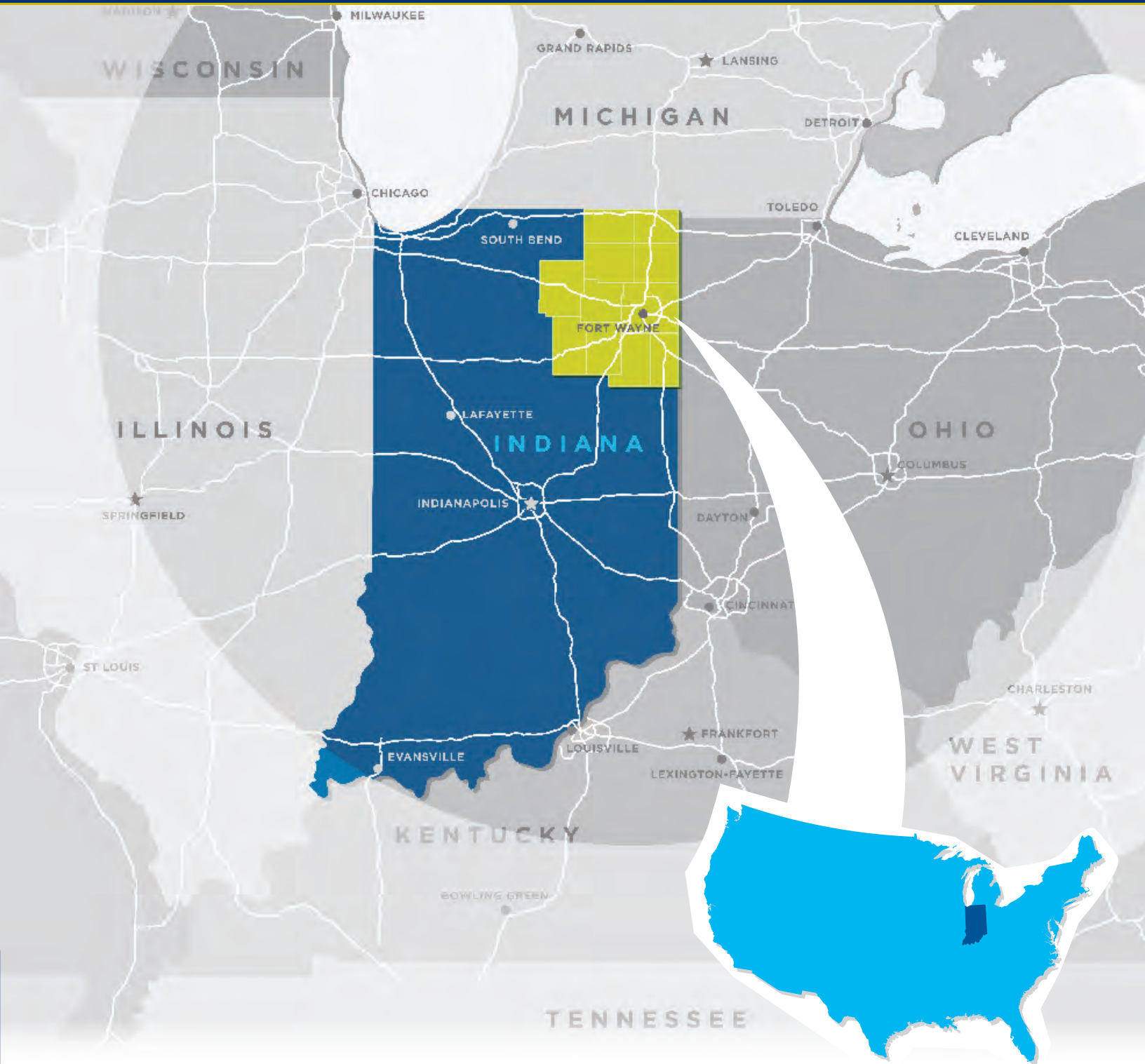


NORTHEAST INDIANA REGIONAL PROFILE



NORTHEAST INDIANA
REGIONAL PARTNERSHIP

THE 11 COUNTIES OF NORTHEAST INDIANA

ADAMS >> ALLEN >> DEKALB >> HUNTINGTON >> KOSCIUSKO >> LAGRANGE >> NOBLE >> STEUBEN >> WABASH >> WELLS >> WHITLEY

TARGET INDUSTRIES OF NORTHEAST INDIANA



SPECIALTY INSURANCE



MEDICAL DEVICE & TECHNOLOGY



VEHICLES



LOGISTICS & E-COMMERCE



FOOD & BEVERAGE



DESIGN & CRAFTSMANSHIP



ADVANCED MATERIALS

MAJOR EMPLOYERS

COMPANY	PRODUCT	EMPLOYMENT*
Parkview Health Systems	General Medical & Surgical Hospitals	9,588
Lutheran Health Network	General Medical & Surgical Hospitals	6,050
Zimmer Biomet	Orthopedic Supplies	4,370
General Motors	Trucks	3,900
Steel Dynamics, Inc.	Scrap Metal Processing & Steel Manufacturing	2,822
Lincoln Financial Group	Insurance Products	1,954
LSC Communications (formerly R.R. Donnelly)	Book & Other Specialized Printing	1,935
BFGoodrich	Tires	1,640
Thor Industries, Inc.	Recreational Vehicles & Travel Trailers	1,467
TI Automotive	Fluid Storage, Transfer & Delivery Systems	1,388

*Full-time employees in Northeast Indiana

Source: Community Research Institute at Purdue Fort Wayne, 2018



INDIANA WAS THE FIRST RIGHT-TO-WORK STATE IN THE GREAT LAKES REGION OF THE U.S.

Right-to-work laws prohibit agreements between labor unions and employers that make membership or payment of union dues or fees a condition of employment.

WORKFORCE

ANNUAL EMPLOYMENT BY PRIVATE INDUSTRY

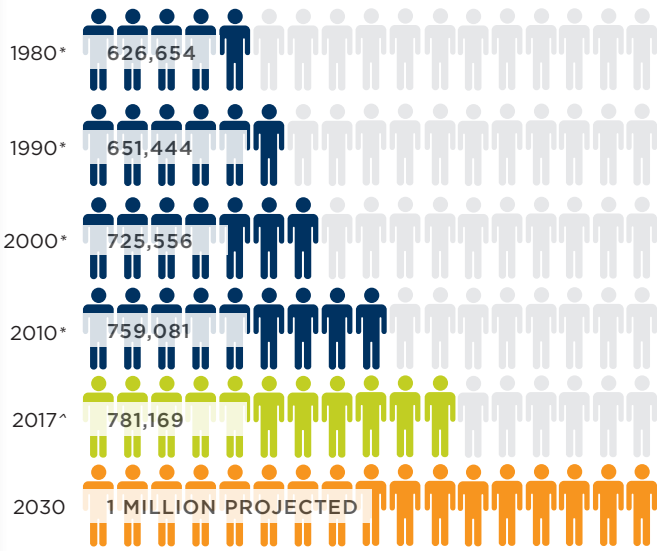
- 29.0%** Manufacturing
- 20.2%** Trade, Transportation & Utilities
- 17.1%** Education & Health Services
- 10.3%** Leisure & Hospitality
- 8.7%** Professional & Business Services
- 4.8%** Financial Activities
- 4.6%** Construction
- 3.3%** Other Services
- 1.3%** Information
- 0.9%** Natural Resources & Mining

EMPLOYMENT & WAGES

OCCUPATION	2016 REGIONAL EMPLOYMENT	2016 REGIONAL WAGE	REGION /US
Management	15,933	\$89,548	76.1%
Legal	1,364	\$80,233	75.7%
Computer & Mathematical	5,126	\$70,075	79.7%
Architecture & Engineering	6,184	\$69,227	82.1%
Healthcare Practitioners & Technical	20,505	\$65,430	82.7%
Business & Financial Operations	12,378	\$59,531	79.3%
Life, Physical & Social Science	1,024	\$54,910	75.3%
Construction & Extraction	12,365	\$45,094	92.2%
Education, Training & Library	17,223	\$43,267	79.4%
Installation, Maintenance & Repair	16,227	\$41,905	89.8%

Source: Emsi, 2018.2; QCEW

POPULATION GROWTH



Source: *US Census Bureau Decennial Census; ^US Census Bureau, Population Estimates



YOUR MONEY GOES FURTHER HERE

It's 47% more affordable to buy a house in Fort Wayne compared to the national average, and property tax is capped at 1%.

Source: National Association of Realtors



INDIANA HAS LEGISLATED 0.25% YEARLY REDUCTIONS

in the Corporate Adjusted Gross Income Tax until it reaches 4.9% in 2021.

STATE TAXES

7%

Sales & Use Tax

5.75%

Corporate Income Tax

3.23%

Individual Income Tax

3%

Business Personal Property Tax

0%

Gross Receipts & Inventory Tax

Source: Indiana Handbook of Taxes, Revenues and Appropriations FY, 2018

TRANSPORTATION



Served by two major interstate highways, I-69 (North/South) and I-80/90 (East/West), also known as the Indiana Toll Road.



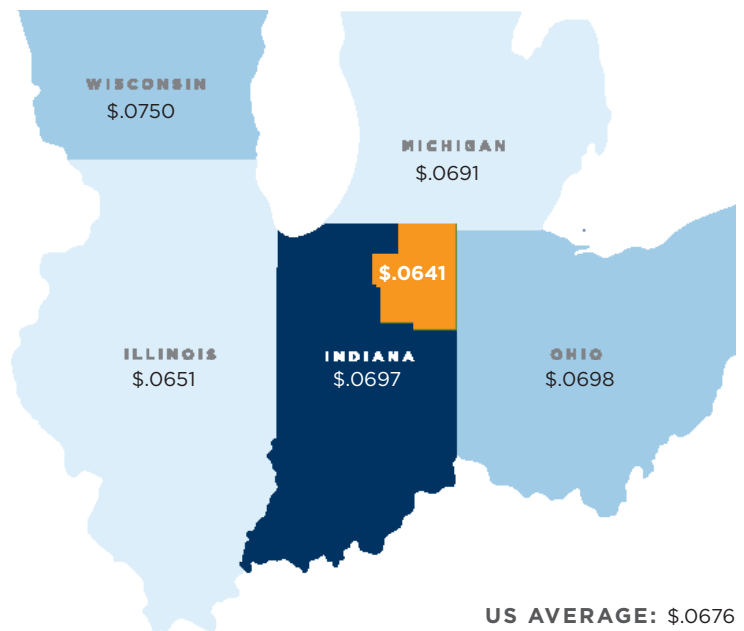
Fort Wayne International Airport is home to four major carriers: Allegiant Air, American, Delta and United.



Served by two Class I freight railroads, CSX and Norfolk Southern.

UTILITY COSTS

AVERAGE INDUSTRIAL RATE (COST/KWH)



Source: U.S. Energy Information Administration, 2018



NATURAL GAS

NIPSCO and Vectren are the region's primary suppliers of natural gas.

TALENT PIPELINE

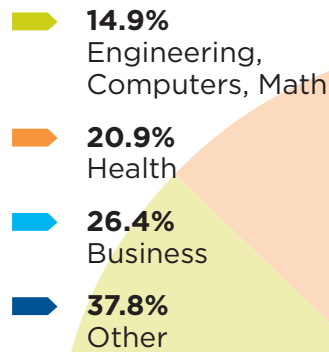
HIGHER EDUCATION

INSTITUTION*	APPROX. ENROLLMENT FALL 2016
Purdue Fort Wayne	12,010
Ivy Tech Northeast	9,323
Indiana Tech	8,113
Trine University	4,430
Grace College	2,300
University of Saint Francis	2,212
Manchester University	1,903
Huntington University	1,393
Indiana Wesleyan Fort Wayne	420

Source: National Center for Education Statistics, Indiana Wesleyan, Ivy Tech, Manchester University, Huntington University, Trine University

*Universities and colleges accredited by the North Central Association of Colleges & Schools

DEGREES AWARDED BY REGIONAL UNIVERSITIES



Source: National Center for Education Statistics, Indiana Wesleyan, Ivy Tech

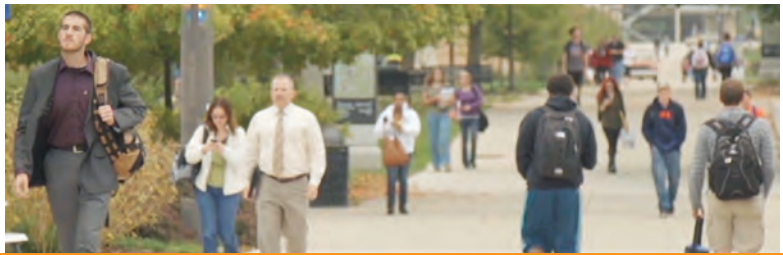
“ Northeast Indiana Works invested **over \$47.9 million** in workforce development and training programs in the last five years. ”

Edmond O’Neal

PRESIDENT OF NORTHEAST INDIANA WORKS

NORTHEAST INDIANA WORKS

Northeast Indiana Works, a non-profit workforce development organization, provides public and private financial and employment resources for education and skills training to meet the needs of regional industries.



Contact us to learn how the Northeast Indiana Regional Partnership can help your business thrive.

We can help you access:

- Incentives, grants, workforce training and special programs
- Industry-specific information and regional data
- Site and building locations

NEINDIANA.COM/RegionalProfile

